

NAMIBIA
May 18 to 29, 2025
With Werner & Myra Kurn

Making Memories that last a lifetime



Itinerary at a Glance

May 18-29, 2025: 12 Days/11 Nights



SUNDAY, MAY 18

Arrivals into Windhoek, Namibia
Windhoek Luxury Suites (1 night, May 18-19)

MONDAY, MAY 19

Private light aircraft flight to Little Kuala near Sossusvlei
Little Kulala (2 nights, May 19-21)

WEDNESDAY, MAY 21

Private light aircraft flight to Swakopmund
Hansa Hotel (2 nights, May 21-23)

FRIDAY, MAY 23

Private light aircraft flight to Skeleton Coast National Park
Hoanib Skeleton Coast Camp (3 nights, May 23-26)

MONDAY, MAY 26

Private light aircraft flight to Ongava in Etosha National Park
Anderssons at Ongava (3 nights, May 26-29)

THURSDAY, MAY 29

Private light aircraft flight back to Windhoek where you will connect to your
departing commercial flight.

TRAVEL MAP



SUNDAY, MAY 18

Upon your arrival into Hosea Kutako International Airport (WDH) in Windhoek and after clearing immigration, you will be met by your driver for a private road transfer to Windhoek Luxury Suites in Windhoek.

WINDHOEK LUXURY SUITES May 18-19

***One Night in a Standard Room**

***Dinner & Breakfast Included**

Windhoek Luxury Suites is located in a beautiful part of Windhoek. Each room has its own garden area with sun terrace, the perfect place to rest from your journey.



MONDAY, MAY 19

Today you will have a private road transfer back to Hosea Kutako International Airport (WDH) for your private light aircraft flight to Little Kulala near Sossusvlei.

**This private flight will likely be in two Cessna C208 Caravans and has an estimated flight duration of 1 hour and 5 minutes.*

**Luggage is limited to 44 lb per person in soft sided bags*

LITTLE KULALA SOSSUSVLEI May 19-21

***Two Nights in a Chalet**

***All Meals, Private Daily Activities, Park Fees, House Drinks (excluding premium drinks), and Laundry**



Nestled within the private 76,000 acre Kulala Wilderness Reserve, Little Kulala is adjacent to Namibia's world-famous Sossusvlei sand dunes.

Each chalet is climate controlled and has its own ensuite bathroom with an indoor and romantic outdoor shower. Relax on your private deck or take a dip into your refreshing plunge pool. At night, your rooftop star bed is perfect for stargazing.

The camp's common area has a well decorated lounge and dining room, along with a beautiful library, an impressive wine cellar and pool.



TUESDAY, MAY 20

Enjoy game drives far from the crowds of other parks on this private reserve.

Go on a nature walk to explore the smaller flora and fauna of the region.

For the adventurous, guided quad and horse pack safaris look at the landscape from a different perspective.

Photographers will want to visit Dead Vlei, an enormous clay pan flanked by red dunes, and skeletal trees that create a surreal image.

A hot air balloon ride provides the perfect aerial view over this uniquely colored and textured landscape *additional cost



SOSSUSVLEI

One of the most photographed places in Sub-Saharan Africa, the Sossusvlei region in Namibia is famous for its high swooping red sand dunes that ring the white salt and clay pans.

A number of plants and animals have adapted to this unique climate, including the ostrich, springbok, gemsbok, and hyena, which all thrive in their dry home. Smaller mammals come out during the cool of the night including bat-eared fox, black-backed jackal, porcupine, Cape fox and aardwolf.



WEDNESDAY, MAY 21

Today you will have a private light aircraft flight to Swakopmund.

Upon arrival at Swakopmund Airport, you will be met by your private guide/vehicle for your private road transfer to Hansa Hotel.

**This private flight will likely be in two Cessna C208 Caravans and has an estimated flight duration of 55 minutes*

**Luggage is limited to 44 lbs per person in soft-sided bags*

**HANSA HOTEL
SWAKOPMUND
May 21-23**



***Two Nights in a Standard Room**

***All Meals (lunch and dinners at local restaurants)**

This classical building dates from 1905 and is perfectly placed so that everything is within easy walking distance. It has received the Best Hotel in Namibia Award and the Award of Excellence multiple times.

All rooms have ensuite bathrooms, air-conditioning and high-speed internet access.



THURSDAY, MAY 22

This morning explore the Atlantic coast with a Dolphin & Seal Catamaran Cruise.
This afternoon enjoy a sunset excursion to Sandwich Harbor.



SWAKOPMUND

The seaside town of Swakopmund is the perfect place to escape the heat of the vast Namib Desert. The jewel of the Namibian Coast, the town reflects its German colonial origins in its architecture. Miles of warm, sandy beaches stretch to the north and south, while the Atlantic Ocean offers the opportunity for a catamaran cruise to see dolphins and seals.

There are plenty of world class restaurants here serving up excellent German beer. Swakopmund is also home to several historical museums and sites.



FRIDAY, MAY 23

Today you will have a private road transfer back to Swakopmund (SWP) for your private light aircraft flight to Hoanib Skeleton Coast Camp in Namibia's iconic Skeleton Coast National Park.

**This private flight will likely be in two Cessna C208 Caravans and has an estimated flight duration of 1 hour and 25 minutes.*

**Luggage is limited to 44 lb per person in soft sided bags*

HOANIB SKELETON COAST CAMP

SKELETON COAST

May 23-26



***Three Nights in a Tented Room**

***All Meals, Private Daily Activities, Park Fees, House Drinks (excluding premium drinks), and Laundry**

Accessible only by light aircraft and with just eight guest tents, this camp is exclusive in the extreme. Each tent features an ensuite bathroom. The shaded veranda has panoramic views of the rugged valley. The camp's shaded outdoor lounge is the perfect place to relax during warm afternoons.

The main area also houses a dining room, bar, library, fire pit, swimming pool, and a deck overlooking a small waterhole where elephants and oryx come to drink.



MAY 24 & 25

Game drive the Hoanib Riverbed in search of desert-adapted wildlife, including elephant and rhino. Drive through the oasis to the Skeleton Coast. Take a nature walk to encounter the smaller creatures as well as the plant life.



SKELETON COAST NATIONAL PARK

This is a prime spot for encountering Namibia's distinctive desert-adapted wildlife, including elephant, giraffe, lion, brown hyena, gemsbok, springbok, steenbok and more.

The nearby Skeleton Coast is famous for the skeletal remains of the shipwrecks that litter the beaches where whale bones once washed ashore.



MONDAY, MAY 26

Today you will have a private light aircraft flight to Anderssons at Ongava, situated in a large private reserve bordering Etosha National Park.

**This private flight will likely be in two Cessna C208 Caravans and has an estimated flight duration of 1 hour.*

**Luggage is limited to 44 lb per person in soft sided bags*

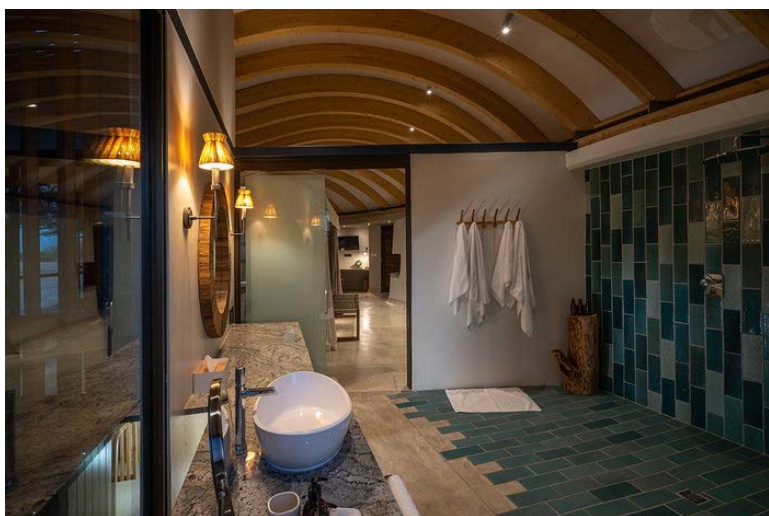
ANDERSSONS AT ONGAVA ETOSHA NATIONAL PARK May 26-29



***Three Nights in a Suite**

***All Meals, Private Daily Activities, Park Fees, House Drinks (excluding premium drinks), and Laundry**

Each of the eight guest suites has an ensuite bathroom and its own private viewing deck with panoramic views of the bush. The main area of the lodge houses both indoor and open-air dining areas, a spacious lounge and bar, a library, a sunken observation terrace, inviting open fireplaces for cold nights, and an infinity-edged pool that looks out onto the reserve with the opportunity to spot wildlife coming to the waterhole.



MAY 27 & 28

Activities here revolve around tracking and viewing the incredible wildlife. Game drives are led by expert guides exploring the savannas, salt pans and waterholes. Guided nature walks explore the flora and fauna in greater detail. The camp's underground hide allows for unobtrusive viewing of the camp's busy waterhole with frequent sightings of plains game including antelope, giraffes, zebras, and warthogs. There are even visits to the Ongava Research Centre Visitor Center.



ETOSHA NATIONAL PARK

Covering more than 8,600 sq miles, Etosha National Park has a diverse landscape of desert, semi-desert and savanna. It is named after the Etosha Pan, a salt desert so large it can be seen from space. However, the pan only makes up a third of the park itself.

Part of Etosha's charm is that the animals are easy to find. Park next to one of the many waterholes and a host of animals including lions, elephants, springboks, gemsboks, giraffes, and more will come by the hundreds. At night, floodlights on the water holes illuminate the nocturnal doings of lions, cheetah, elephants, and rhinos.



THURSDAY, MAY 29

Today you will have a private light aircraft flight back to Hosea Kutako International Airport (WDH) in Windhoek, where you will connect to your departing commercial flight.

**This private flight will likely be in two Cessna C208 Caravans and has an estimated flight duration of 1 hour and 25 minutes.*

COST



Per Person Double Occupancy
\$14,995 cash/check or \$15,445 credit card

SAFARI INCLUSIONS

- 1 night at Windhoek Luxury Suites in a Standard Room: Dinner and Breakfast Included
- 2 nights at Little Kuala in a Chalet: All meals, *Private* Daily Activities, Park Fees, House Drinks (excluding some premium drinks), and Laundry
- 2 nights at Hansa Hotel in a Standard Room: All meals, *Private* Daily Activities, Park Fees, House Drinks (excluding some premium drinks), and Laundry
- Private morning Dolphin & Seal Catamaran Cruise and Sunset excursion to Sandwich Harbor
- 3 nights at Hoanib Skeleton Coast Camp in a Tented Room: All Meals, *Private* Daily Activities, Park Fees, House Drinks (excluding some premium drinks), and Laundry
- 3 nights at Anderssons at Ongava in a Suite: All Meals, *Private* Daily Activities, Park Fees, House Drinks (excluding some premium drinks), and Laundry
- All Private Light Aircraft Flights in the itinerary
- Airport transfers in Africa
- Private Vehicles and Guides

EXCLUSIONS

- International flights
- Tipping of Safari Camps staff, guides, and driver
- Anything not mentioned above

OCEAN ENTERPRISES TRAVEL
SHERRIE@OCEANENTERPRISES.COM / HAYLEY@OCEANENTERPRISES.COM/
MARINA@OCEANENTERPRISES.COM
WWW.OCEANENTERPRISESTRAVEL.COM
7710 BALBOA AVE STE 201, SAN DIEGO, CA 92111
TEL: 858-565-9474 / CST #2103885-40

