



BOTSWANA
June 29 to July 8, 2026
With Werner & Myra Kurn

Making Memories that last a lifetime



Itinerary at a Glance

June 29-July 8, 2026: 10 Days/9 Nights

JUNE 29

Arrivals into Maun, Botswana
Light aircraft flight to Sable Alley
Sable Alley (3 nights, June 29-July 2)

A luxury tented lodge situated within the Khwai Private Reserve bordering the Okavango Delta.

JULY 2

Light aircraft flight to Belmond Savute Elephant Lodge in the Linyanti region.
Belmond Savute Elephant Lodge (3 nights, July 2-5)

This lodge sits in a prime location in Botswana's Linyanti region. Enjoy the elevated heated pool that has incredible views of a thriving watering hole.

JULY 5

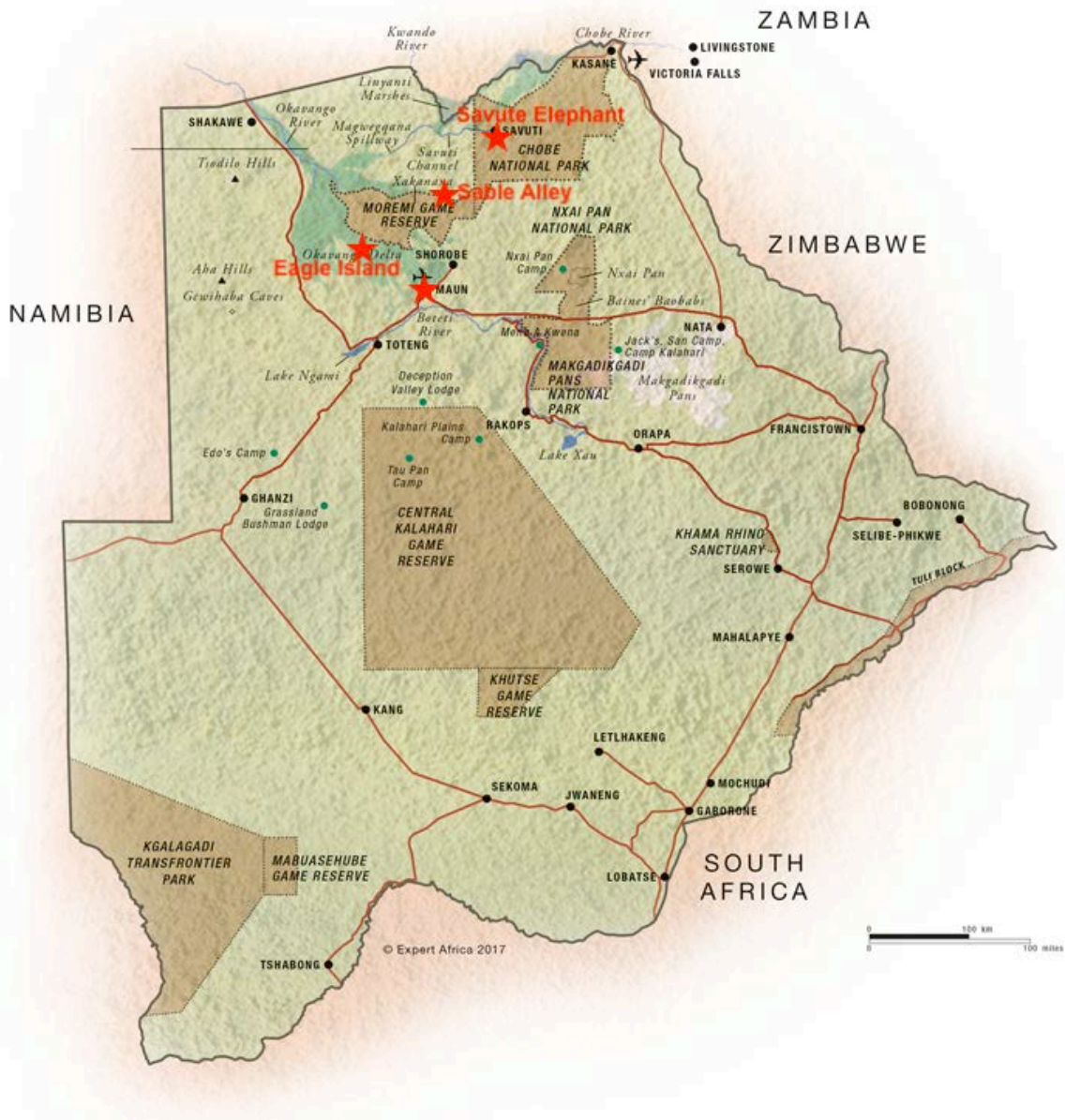
Light aircraft flight to Eagle Island Lodge in the Okavango Delta
Belmond Eagle Island Lodge (3 nights, July 5-8)

Belmond Eagle Island Lodge is your ultimate water safari destination. Discover a modern, sophisticated sanctuary on a private island in the heart of the Okavango Delta.

JULY 8

Light aircraft flight back to Maun where you will connect to your departing commercial flight to Johannesburg or Cape Town

TRAVEL MAP



MONDAY, JUNE 29

Upon your arrival at Maun Airport (MUB) and after clearing immigration, you will be met and assisted to your light aircraft flight to Sable Alley in a private part of the Khwai Community Reserve within the Okavango Delta.

Luggage is limited to 44 lbs per person in soft-sided bags.

SABLE ALLEY

June 29-July 2



***Three Nights in a Tented Room**

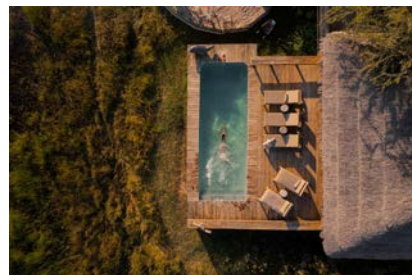
***All Meals, Private Daily Activities, Park Fees, House Drinks (excluding premium drinks), and Laundry**

Sable Alley has twelve spacious and stylish tents on raised decks elevated above the bush.

Each tent has its own bathroom with an indoor and outdoor shower.

Guests can kick back and relax at the end of the day from their private, shaded veranda overlooking the lovely lagoon, often filled with a resident pod of thirty hippos as well as elephants and buffaloes stopping by for a drink.

The main areas all overlook the popular lagoon. There is a lounge and dining area as well as outdoor seating. A camp swimming pool lets guests play in their own man-made lagoon.



JUNE 30 & JULY 1

Because the camp sits in a private reserve and only three vehicles per sighting go out a day, the camp provides an exclusive view of the land and animals.

Day drives are conducted by expert rangers in traditional safari vehicles.

Night drives are an exhilarating way to encounter nocturnal animals at play such as leopards, spiky porcupines, and honey badgers.

Mokoro rides are great for bird watching and offer guests the chance to spot hippos and crocodiles.



KHWAI PRIVATE RESERVE

The 440,000-acre Khwai Private Reserve borders the Okavango Delta and comprises a diverse number of habitats including riverine woodlands, open floodplains, river, and mopane woodland.

This part of Botswana is lush year-round, fed by the rains from Angola that run down the Khwai and Sable Alley Rivers. A variety of game animals live here including lions, leopards, wild dogs, elephants, buffaloes, and the sable antelopes.



THURSDAY, JULY 2

Today you will have a light aircraft flight to Savute Elephant Lodge in northern Botswana's Linyanti region.

After getting settled in, enjoy an afternoon game drive.

Luggage is limited to 44 lbs per person in soft-sided bags.



BELMOND SAVUTE ELEPHANT LODGE July 2-5



***Three Nights in a Tented Room**

***All Meals, Private Daily Activities, Park Fees, House Drinks (excluding premium drinks), and Laundry**

Each of the twelve spacious tents have polished timber floors, a writing desk, and comfortable chairs. The en-suite bathrooms have twin basins, flush toilets, and both an indoor and outdoor shower. For added privacy, each tent includes an outdoor lounge furnished with comfortable easy chairs and a day bed. The camp's main area houses the bar, lounge and dining area, and has panoramic views of the many elephants that wander around the camp.

JULY 3 & 4

Spend your days on private game drives in the morning and afternoon, returning to camp for lunch and relaxation

Activities also include guided walks, birdwatching in a private hide, and stargazing.

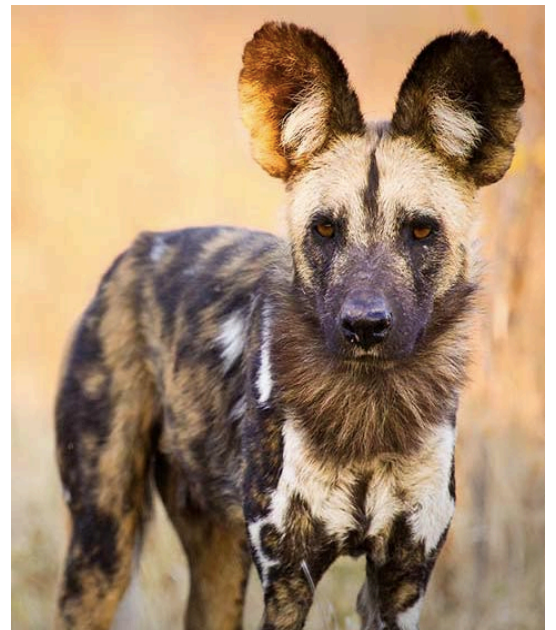
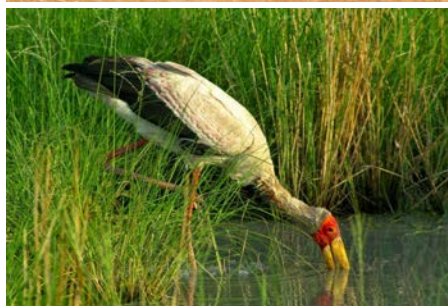
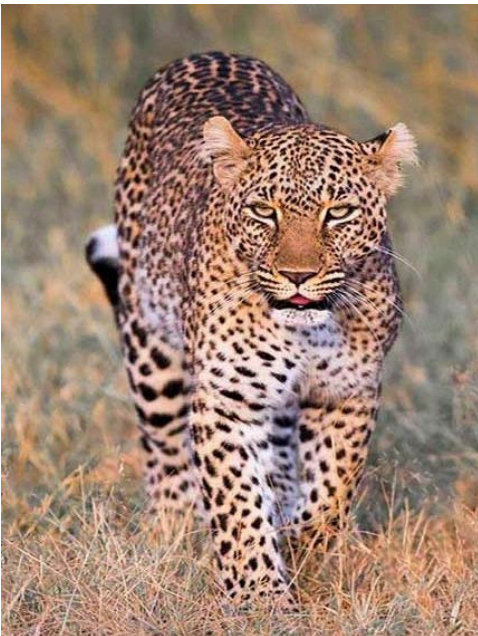
Enjoy a massage at an additional price.

BOTSWANA LINYANTI REGION



The Linyanti River forms a natural border between Botswana and Namibia. In Botswana's dry winter months, herds of Africa's large mammals congregate at Linyanti's rivers and lagoons. The Savute Channel is part of this dynamic eco system. This area provides not only breathtaking vistas, but also unmatched wildlife observation opportunities.

Zebra, antelope, and red lechwe migrate through these wetlands, closely followed by lions, leopards, cheetahs, wild dogs, and hyena. Hippo and elephant call this area home, along with hundreds of bird species.



SUNDAY, JULY 5

Today you will have a light aircraft flight to Eagle Island Lodge in the heart of the Delta.

Luggage is limited to 44 lbs per person in soft-sided bags.

BELMOND EAGLE ISLAND LODGE

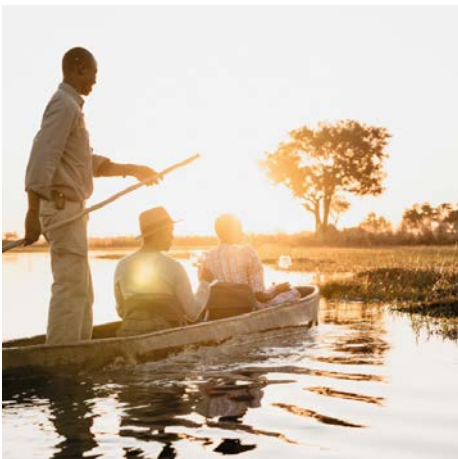
July 5-8



***Three Nights in a Tented Room**

***All Meals, Private Daily Activities, Park Fees, House Drinks (excluding premium drinks), and Laundry**

Belmond Eagle Island Lodge is your ultimate water safari destination. Discover a modern, sophisticated sanctuary on a private island in the heart of the Okavango Delta. High-ceilinged tented rooms flood with light; each room has a plunge pool and oversized bed with views of the Delta.



JULY 6 & 7

Explore this incredible area on private game drives!
Activities Include daily game drives, mokoro, boating, visiting a local village, walking safari and fishing. Enjoy a helicopter ride at an additional cost.

OKAVANGO DELTA

Botswana's Okavango Delta is surely one of the seven wonders of the natural world. The delta is formed as the seasonal flooding of the Okavango River, flowing from the Angola highlands, empties into the Kalahari Desert basin. The winter floods that peak from June to August make large lakes, channels, and lagoons that attract some of the world's highest concentrations of wildlife.



WEDNESDAY, JULY 8

Later this morning you will have a light aircraft flight to Maun where you can connect with your commercial flight to Johannesburg.

COST

Per Person Double Occupancy
\$14,595 cash/check or \$15,033 credit card

SAFARI INCLUSIONS

- 3 nights at Sable Alley in a Tented Room: All meals, *Private* Daily Activities, Park Fees, House Drinks (excluding some premium drinks), and Laundry
- 3 nights at Savute Elephant Lodge in a Tented Room: All Meals, *Private* Daily Activities, Park Fees, House Drinks (excluding some premium drinks), and Laundry
- 3 nights at Eagle Island Lodge in a Tented Room: All Meals, *Private* Daily Activities, Park Fees, House Drinks (excluding some premium drinks), and Laundry
- Light aircraft flights between camps
- Airport transfers in Africa
- Private Driver/guides on safari
- Road transfers between camps

EXCLUSIONS

- International flights
- Flights between Johannesburg (JNB) and Maun (MUB)
- Tipping of Safari Camps staff, guides, and driver
- Anything not mentioned above



OCEAN ENTERPRISES TRAVEL
SHERRIE@OCEANENTERPRISES.COM/HAYLEY@OCEANENTERPRISES.COM/
MARINA@OCEANENTERPRISES.COM
WWW.OCEANENTERPRISESTRAVEL.COM
7710 BALBOA AVE STE 201, SAN DIEGO, CA 92111
TEL: 858-565-9474 / CST #2103885-40