



# KENYA

June 14 to 22, 2026  
With Jay Dornheggen

*Making memories that last a lifetime*



## ***Itinerary at a Glance***

**June 14 to 22, 2026: 9 Days/8 Nights**



### **JUNE 14**

Arrival into Nairobi

Emara Ole-Sereni (1 night, June 14-15)

*Emara Ole-Sereni is a luxurious five-star hotel in Nairobi, Kenya, offering modern grandeur, unmatched services, and picturesque views.*

### **JUNE 15**

Road transfer to Wilson Airport and light aircraft flight to Ol Pejeta Bush Camp

Ol Pejeta Bush Camp (4 nights, June 15-19)

*Set on the banks of the Ewaso Nyiro River, Ol Pejeta Bush Camp provides an authentic African safari experience.*

### **JUNE 19**

Light aircraft flight to Encounter Mara

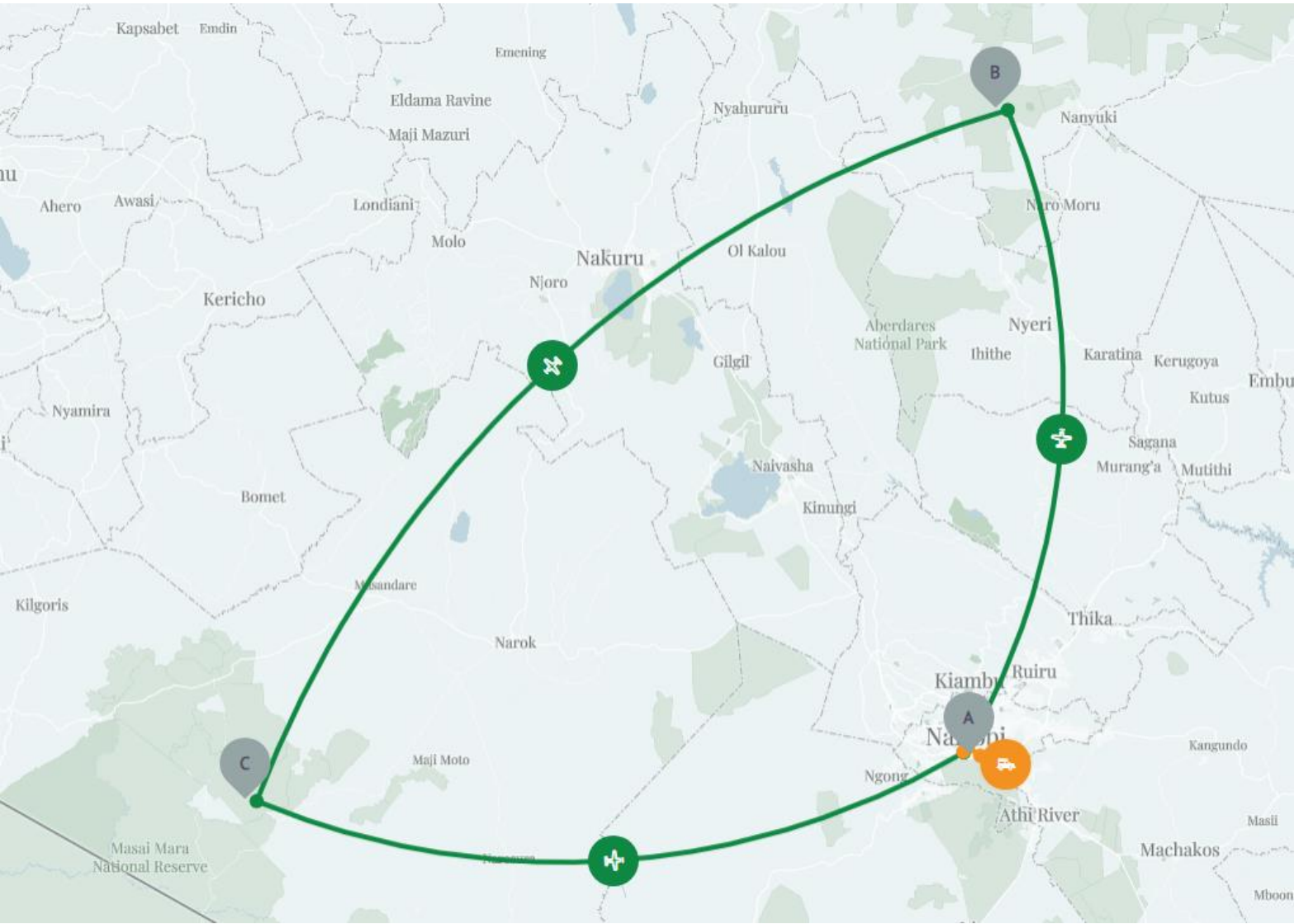
Encounter Mara (3 nights, June 19-22)

*Encounter Mara is a classic tented safari camp nestled in Kenya's Mara Naboisho Conservancy, offering exceptional wildlife viewing, intimate bush luxury, and a strong commitment to conservation and community.*

### **JUNE 22**

Light aircraft flight back to Wilson Airport and transfer to Nairobi international Airport for your departure flights.

# TRAVEL MAP





# EMARA OLE-SERENI



JUNE 14-15

\*1 Night Stay in a Deluxe Room

\*Breakfast included

*Located adjacent to Nairobi National Park, the Emara Ole-Sereni offers sweeping views of wildlife just beyond the glass, creating a unique sense of place from the moment you arrive. Enjoy world-class amenities, spacious and elegantly designed rooms, multiple dining options, and a rooftop bar with panoramic city and park vistas.*



## JUNE 14, SUNDAY

Upon your arrival at Jomo Kenyatta International Airport (NBO) in Nairobi, you will be met immediately off your flight for special assistance through immigration and for your private road transfer to Emara Ole-Sereni.





## JUNE 15, MONDAY

This morning you will have a private road transfer to Wilson Airport for your light aircraft flight to Ol Pejeta Bush Camp.

*\*Luggage is limited to 33lbs per person in soft-sided bags*

*\*The flight is currently scheduled to depart Wilson at 10:20am and arrive at Kamok at 11:20am. There may be stops en route.*



## OL PEJETA BUSH CAMP

  
JUNE 15-19

*\*Four Night Stay in a Tented Room*

*\*All Meals, Private Daily Activities, Park Fees, House Drinks and Laundry included*

*Ol Pejeta has eight tents, all which have an en-suite bathroom, and hot running water. In the morning, you can enjoy a delicious coffee and quietly watch the flock of weaver birds fluttering in the fever trees. As the evening approaches, gather around the fireplace and relax with a glass of wine while listening to the roaring of lion across the conservancy.*





**JUNE 16-18**

Choose from game drives and enjoying the camp facilities.

\*Also included is a visit to the Northern White Rhino endangered species enclosure and an excursion with the canine anti-poaching unit.

## LAIKIPIA COUNTY



The terrain of the Ol Pejeta Conservancy varies from marshlands and savannahs to thickets of acacia and yellow-green fever trees, providing a diverse habitat for a wide range of wildlife. The conservancy boasts a high density of wildlife, including the Big 5 and over 300 species of birds. However, it is most renowned for its black and white rhino population. It is the only place in the world to view the last two northern white rhino.





# ENCOUNTER MARA

JUNE 19-22

\*Three Night Stay in a Tented Room

\*All Meals, Private Daily Activities, Park Fees, House Drinks (excluding some premium drinks), and Laundry included

*This traditional style tented camp sits on the edge of the savannah under the shade of acacia trees. Guests can watch wildlife from the camp's outdoor viewing deck, including the visitors to the nearby saltlick.*

*The lounge tent contains sofas and armchairs positioned around coffee tables strewn with books. Each of the 10 guest tents have a king-size bed and ensuite bathroom. Spend your downtime on the daybed of your shaded veranda.*

## JUNE 19, FRIDAY

This morning you will have a light aircraft flight to Encounter Mara, situated on the private Naboisho Conservancy on the northern border of the legendary Masai Mara National Reserve.

\*Luggage is limited to 33lbs per person in soft-sided bags

\*The first flight is currently scheduled to depart Kamok at 9:10am and arrive at Ol Seki at 11:00am. There may be stops en route.





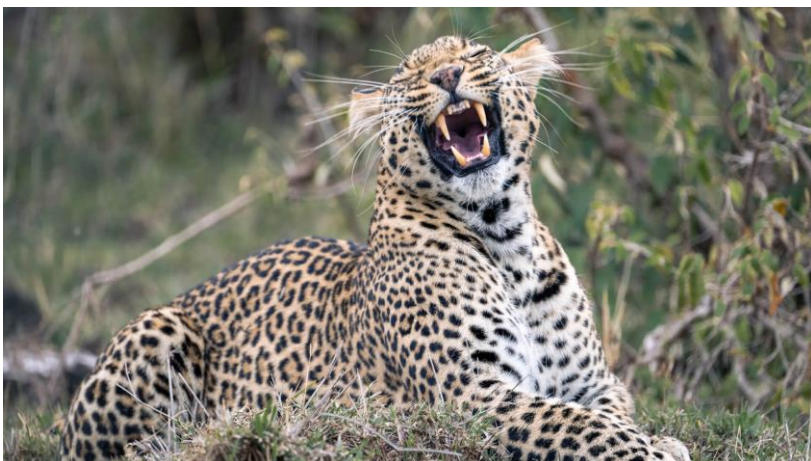
## JUNE 20 & 21

Enjoy early morning and late afternoon game drives, picnics, and sundowners. When back at the camp, enjoy a cup of tea or a cocktail and watch the wildlife from the outdoor viewing deck.



## MARA NABOISHO CONSERVANCY

*This private conservancy borders the Masai Mara National Reserve. It has a dense wildlife population, including a particular high number of lions. Expect to see giraffe, elephant, zebras, big cats and lots more!*





## **JUNE 22, MONDAY**

This morning you will transfer to the airstrip for your light aircraft flight back to Wilson Airport Nairobi.

*\*Luggage is limited to 33lbs per person in soft-sided bags*

*\*This flight is currently scheduled to depart Ol Seki at 11:00am and arrive Wilson at 12:20pm.  
There may be stops en route.*

Upon your arrival at Wilson Airport (WIL) in Nairobi, your driver will meet you for your private road transfer back to Jomo Kenyatta International Airport (NBO) where you will have special assistance with connecting to your departure flight.



## COST



Per person double occupancy  
\$8,500 cash/check or \$8,755 credit card

## SAFARI INCLUSIONS

- 1 night at Emara Ole-Sereni with Breakfast included
- 4 nights at Ol Pejeta Bush Camp: All Meals, Private Daily Activities, Park Fees, House Drinks (excluding some premium drinks), and Laundry
- 3 nights at Encounter Mara: All Meals, Private Daily Activities, Park Fees, House Drinks (excluding some premium drinks), and Laundry
- All light aircraft flights in the itinerary
- Private driver/guides on safari
- Airport transfers in Africa

### Price Excludes

- International flights
- Kenya Electronic Travel Authorization (eTA)
- Tipping of Safari Camps staff, guides, and driver
- Anything not mentioned above

OCEAN ENTERPRISES TRAVEL  
SHERRIE@OCEANENTERPRISES.COM/HAYLEY@OCEANENTERPRISES.COM  
MARINA@OCEANENTERPRISES.COM  
WWW.OCEANENTERPRISESTRAVEL.COM  
7710 BALBOA AVE STE 201, SAN DIEGO, CA 92111  
TEL: 858-565-9474 / CST #2103885-40

